



SF Proving tanks

5 000-10 000-20 000- 25 000 litres

Data sheet: DS/MC/0004/EN Ed. 06-2019

www.isoilmeter.com

Proving tanks are used for calibration of p.d. meters, as well as dosing pumps or of other tanks used as secondary instruments. Proving tanks of such capacities are used for calibration of both p.d. and other meter types in pipeline product transfer at refineries/ oil deposits. The proving tank is filled and drained to wet the internal surface, then it can be loaded through a lower piping (provided by the customer). A reading scale with gauge plate on the bottom part of the proving tank indicates the zero value. The window on the upper neck has a reading scale and it can be reached thanks to a ladder and a walking surface.

Standard

These proving tanks conform to OIML R120 International Recommendation. Tolerance of measurement is as follows:

5 000 L	→	± 2 L
10 000 L	→	± 4 L
20 000 L	→	± 8 L
25 000 L	→	± 10 L

Upon request: the proving tank can be supplied with calibration certificate recognized by EA, IAF, and ILAC (valid both at European and at international level).

Reading scale partition and range

5 000/ 10 000/ 20 000/ 25 000 L	→	2 L / ± 140 L
---------------------------------	---	---------------

Calibration is made by filling the proving tanks by using smaller volume tanks (1000 or 2000 litres), often mounted on the proving tanks to be calibrated in order to make tests easier and faster.

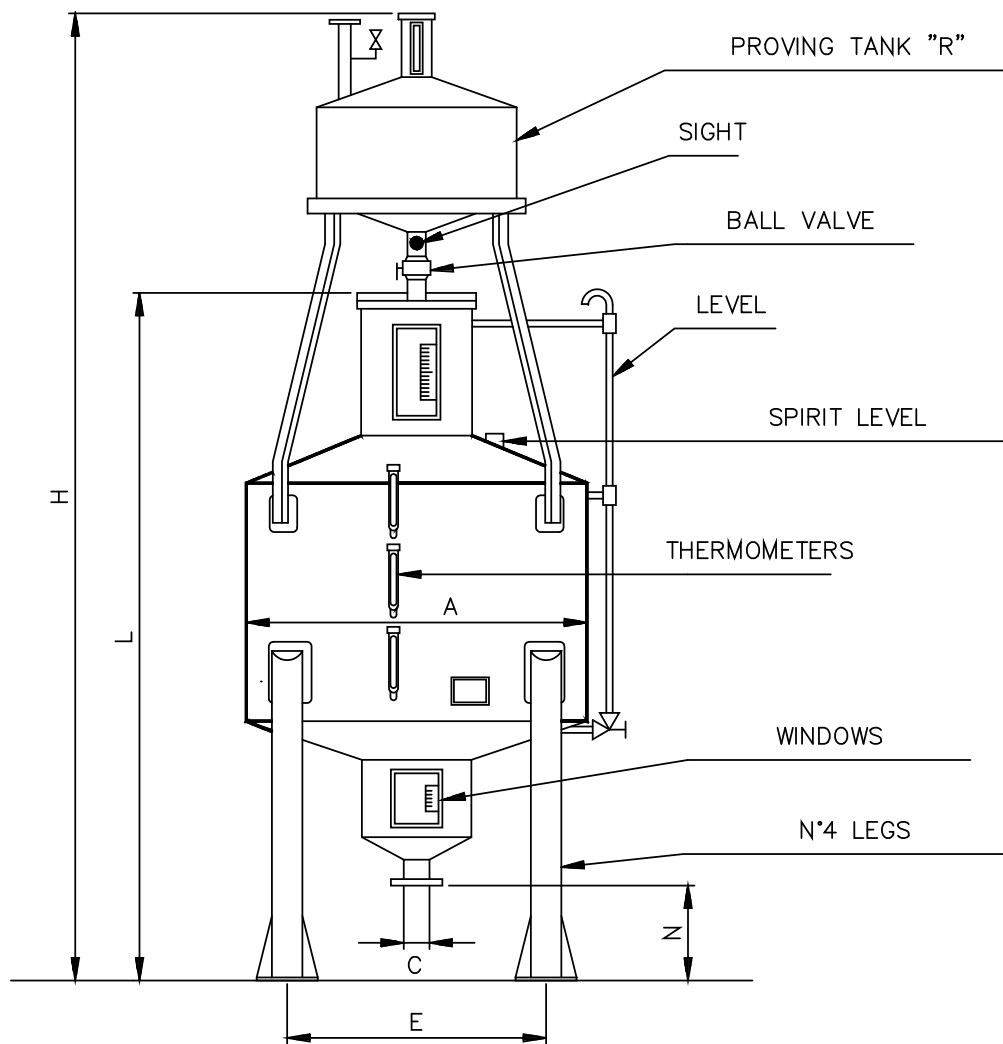
Construction

Body:	<i>Carbon steel with reinforcement parts</i>
Reading scale:	<i>Plexiglass, on the upper and lower neck of the proving tank</i>
Gauge plate:	<i>AISI 304, adjustable for calibration and fixed on the neck with sealed screws</i>
Painting:	<i>External epoxy paint</i>
Included accessories:	<i>Spirit level Nr.3 thermometers Eyebolts for lifting and bolts for fixing</i>
Options upon request:	<i>Insulation Draining pump (loose) 1000 or 2000 litres proving tank mounted on the upper framework</i>



Dimensions

Dimensions in mm



Technical features

TYPE	CAPACITY	'R' PROVING TANK CAPACITY	DIMENSIONS (mm)						WEIGHT (KG)
			A	C	E	H	L	N	
SF 5 000	5 000 LITRES	1 000 L	2312	4"	1635	6290	4235	800	1 800
SF 10 000	10 000 LITRES	2 000 L	2312	6"	1635	7995	5483	900	2 400
SF 20 000	20 000 LITRES	2 000 L	2312	8"	1635	10367	7963	900	3 700
SF 25 000	25 000 LITRES	1 000 L	2312	10"	1635	11270	9155	900	4 200