



Preset valve

V 705 3"

Data sheet: *DSVA/0003/EN Ed. 10-2019*

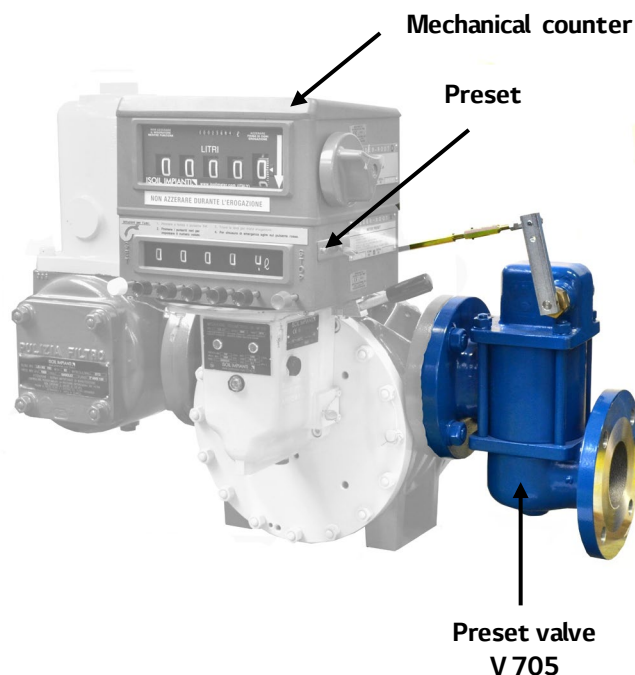
www.isoilmeter.com

Preset valves provide an accurate and automatic control of a pre-determined quantity of liquid to be delivered to the flow meter.

The V 705 3" Preset Valve is usually fitted at the flow meter outlet and connected to the preset register via an adjustable mechanical linkage.

Starting operation only requires setting of the required quantity on the preset register by means of push buttons, zeroing of the meter counter and pulling of preset handle to open the valve.

As soon as product delivery is over, the connections between the preset register and the preset valve allow a two-stage closure of the valve itself.



Applications

- Tank truck and rail car loading
- Custody transfer and inventory control
- Batching and blending of products in the petrochemical and process control industry.

Features

- Compact design
- Accurate shut-off
- Batch quantity up to 99999 litres
- Emergency stop
- Preset with electrical switch for pump remote control (optional).

Check function

To ensure a correct venting of air from the air separator mounted upstream the meter, back pressure on the liquid downstream the meter is needed.

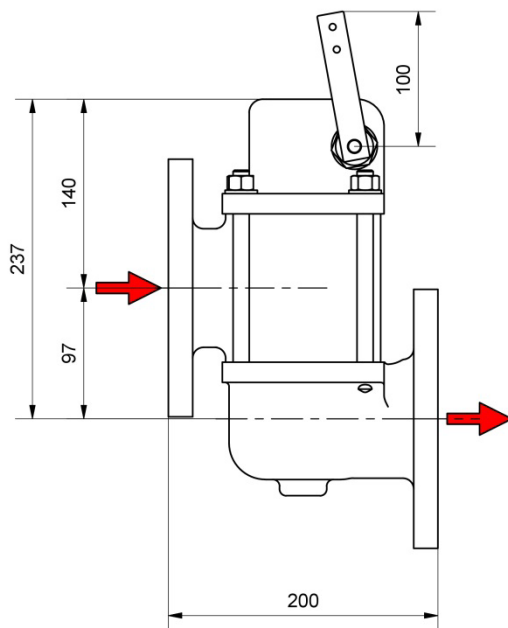
Therefore a spring with a disc is mounted in the preset valve: this mechanism opens when liquid is flowing.

When the air vent valve is open, the check valve closes thus allowing proper elimination of air/gas while during product delivery the pressure of the liquid opens the check valve.

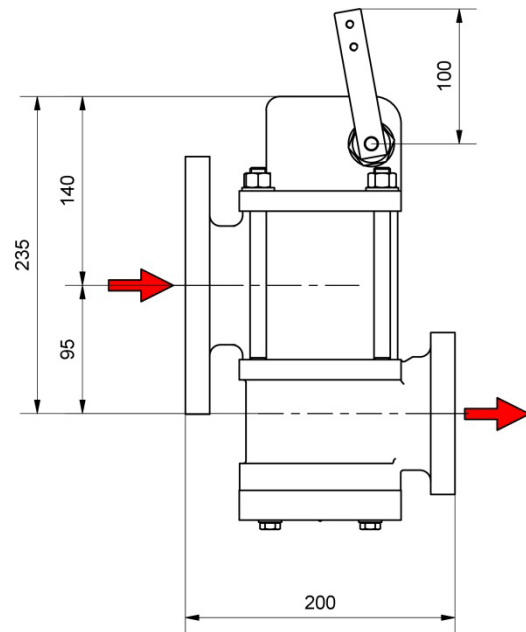
Dimensions

Indicative dimensions in mm

Preset valve V 705 without check



Preset valve V 705 with check (k)



Technical data

Material (body):	<i>Aluminium (standard) Stainless steel (upon request mod. VX 705)</i>
Gaskets:	<i>Nitrile (standard) Viton / PTFE (upon request)</i>
Max flow rate:	<i>1 300 L/min.</i>
Outlet connection:	<i>3" ANSI 150 FF (standard) Square flanges 120 x 120 mm (upon request)</i>
Max working pressure:	<i>10 bar</i>