



Preset valve

MPV 4"

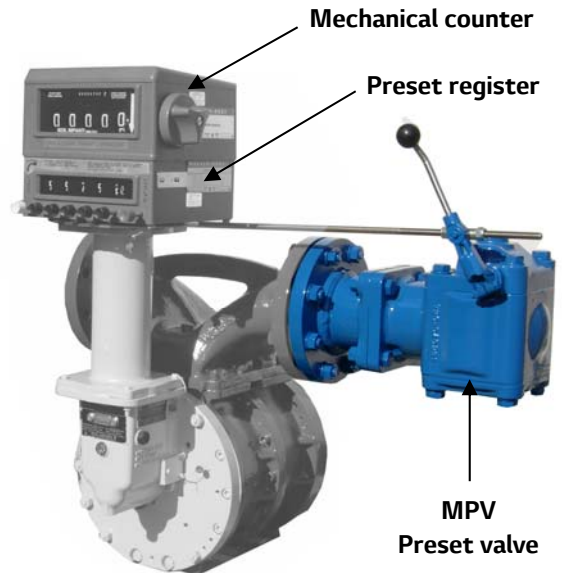
Data sheet: *DS/VA/0005/EN Ed. 04-2018*

Preset valves provide an accurate and automatic control of a pre-determined quantity of liquid to be delivered to the flow meter.

The MPV 4" Preset Valve is usually fitted at the flow meter outlet and connected to the preset register via an adjustable mechanical linkage.

Starting operation only requires setting of the required quantity on the preset register by means of push buttons, zeroing of the meter counter and pulling of preset handle to open the valve.

As soon as product delivery is over, the connections between the preset register and the preset valve allow a two-stage closure of the valve itself.



Applications

- Tank truck and rail car loading
- Custody transfer and inventory control
- Batching and blending of products in the petrochemical and process control industry.

Features

- Compact design
- Accurate shut-off
- Batch quantity up to 99999 litres
- Emergency stop
- Preset with electrical switch for pump remote control (optional).

www.isoilmeter.com

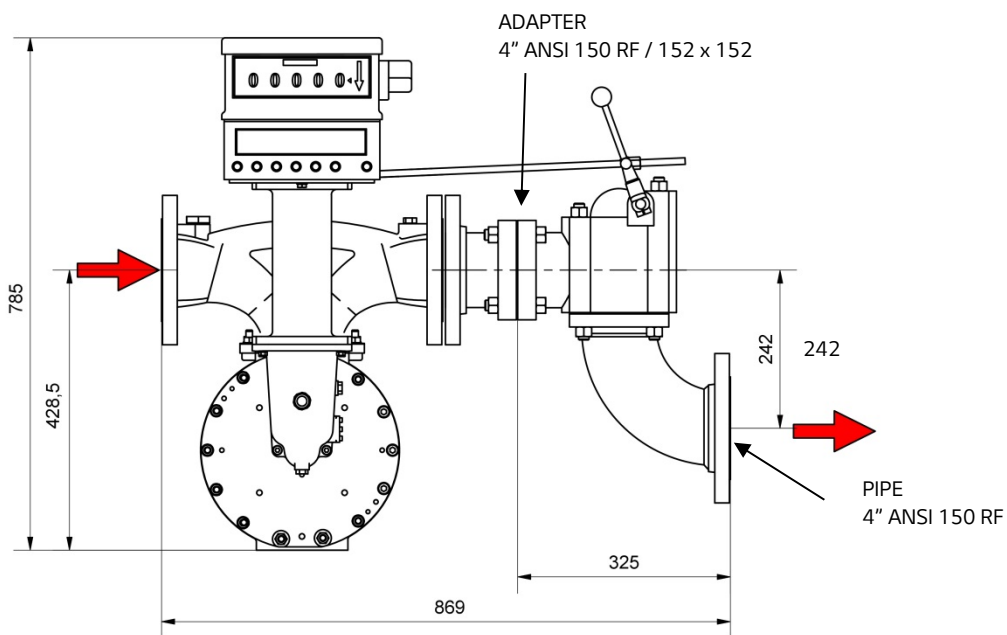
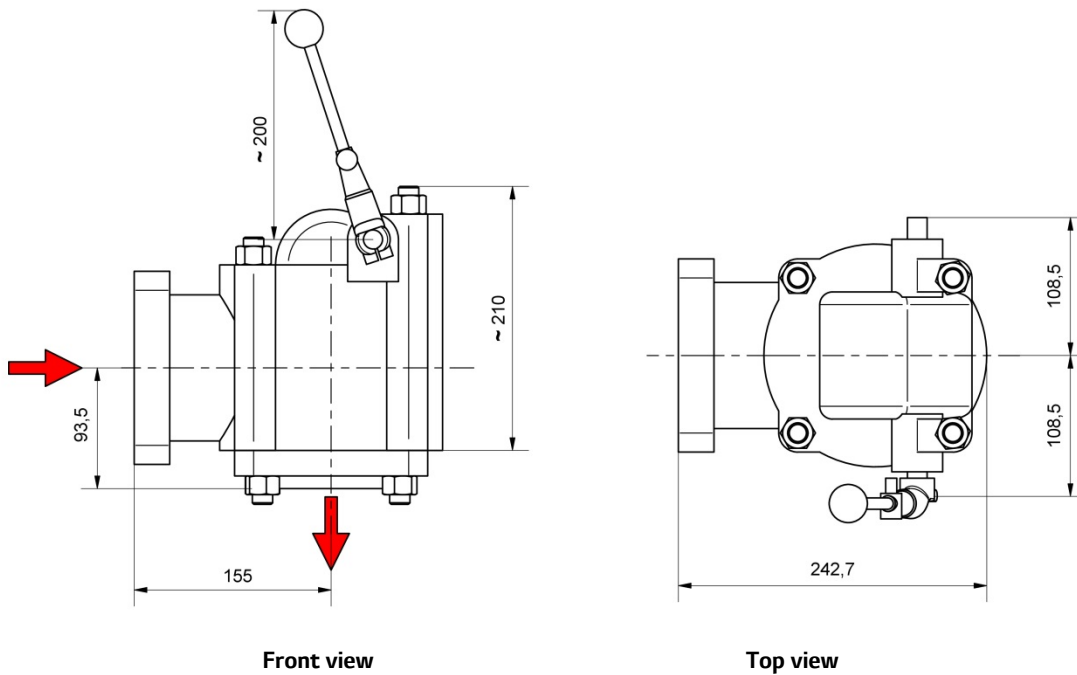
Code example:

MPV 4 0 A 0

Dimension: 4"	4	↑
Nitrile gaskets (standard)	0	↑
Viton gaskets (upon request)	1	↑
Inlet with adapter 4" ANSI 150 RF	A	↑
Inlet without adapter 4" ANSI 150 RF	B	↑
Outlet 152x152mm (standard)	0	↑
Outlet with 90° nozzle - 4" ANSI150 RF	1	↑

Dimensions

Indicative dimensions in mm



Technical data

Material (body):	Aluminium
Gaskets:	Nitrile (standard) Viton (upon request)
Max flow rate:	2 400 L/min.
Outlet connection:	152 x 152 mm (standard) 4" ANSI 150 RF (upon request)
Max working pressure:	10 bar