



Encoder EM T2-2

Pulses emitter for mechanical counter

Data sheet: *DS/EM/0005/EN Ed. 04-2018*

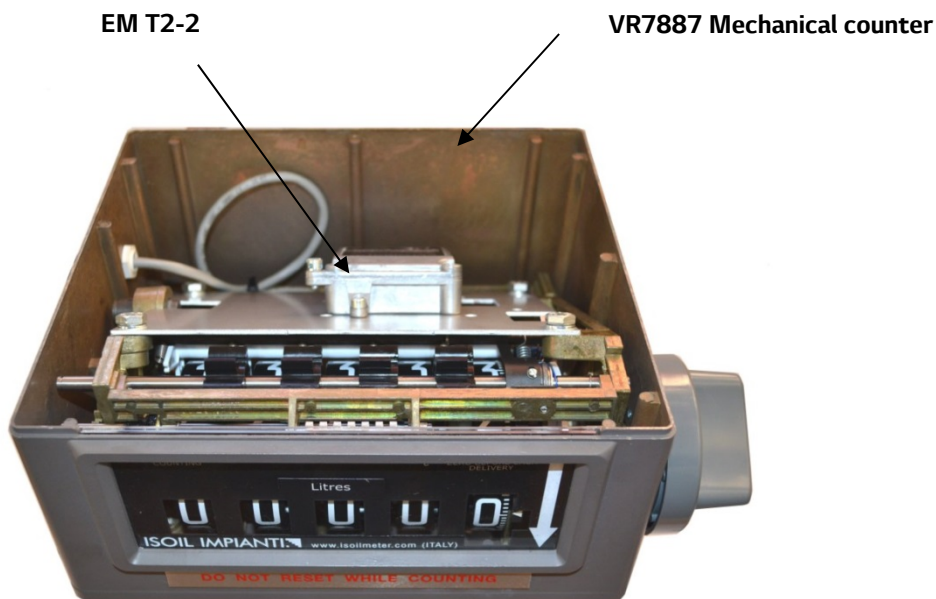
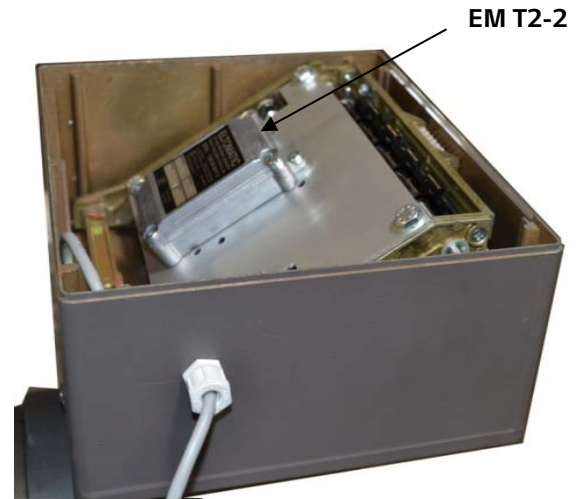
The EM T2-2 encoder can be mounted directly in the Veeder-Root 7887 mechanical counter and it can be easily installed inside it after removing the cover. The plate of the encoder only needs 4 screws to be fixed.

Mounting

This pulse emitter can be fixed to all ISOIL p.d. meters with mechanical counter or with mechanical counter and ticket printer.

The cable used to connect the EM T2-2 passes through a side-hole in the cover while a polymeric cable gland guarantees the side-hole to be watertight.

Upon request, an explosion proof micro-switch can be installed in order to send an electric signal each time the mechanical counter is reset.



Top view inside the VR7887 mechanical counter with EM T2-2

Pulses/liter

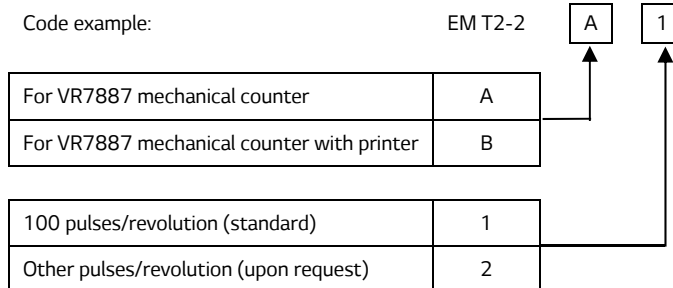
P.D. METER MODEL	PULSES/LITER
SBM 32:	10
SBM 75:	10
SBM 150:	10
BM 200:	10
BM 400:	10 o 1*
BM 600:	1*
S 9000:	1*
P 4000:	1*
LBM 1000:	1*
LBM 3000:	1*

* For mechanical counter in m³

Codification

Code example:

EM T2-2

**Technical data****Environmental features**

Working temperature:	-30 ÷ +60°C
----------------------	-------------

Construction

Cable:	4 wires shielded cable, length 2 m.
Colors of wires:	+Vdc green 0 Vdc brown Chanel 1 white Chanel 2 yellow
Pulses:	100 pulses/revolution, bidirectional (standard) Different pulses/revolution (upon request)

Electrical characteristics

Power supply:	5 ÷ 25 Vdc ±10%
Consumption:	10 ÷ 30 mA standard Max 17 mA
Duty cycle:	square wave, 50% ±10%
Electrical protection :	II 2 G Ex d IIB T6

Pulses trasmission

Channels:	2
Pulses output:	NPN open collector
Max output current:	30 mA